

All Forbo Flooring Systems' sales organisations worldwide have a certified Quality Management System in accordance with ISO 9001. All Forbo Flooring Systems' manufacturing operations have a certified Environmental Management System in accordance with ISO 14001. The Life Cycle Assessment (LCA) of Forbo Flooring Systems' products is documented in individual Environmental Product Declarations (EPDs) which can be found on all of our websites.



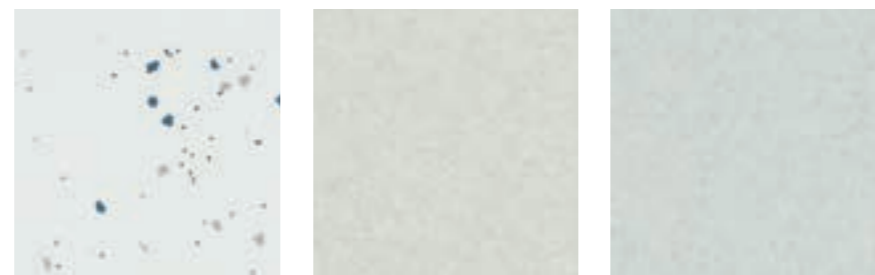
**Australia**  
 Forbo Flooring Systems Pty Ltd  
 23 Ormsby Place  
 Wetherill Park, NSW 2164  
 Tel: 1800 224 471  
 Fax: 1800 662 566  
 info.au@forbo.com  
 www.forbo-flooring.com.au

**New Zealand**  
 Inzide Commercial Ltd  
 Level 2, 34 Barnys Point Rd  
 Takapuna Auckland, 0622  
 Tel: +64 9 441 9850  
 Free call: 0800 800 656  
 Fax: +64 9 441 9851  
 www.inzide.co.nz  
 sales@inzide.co.nz

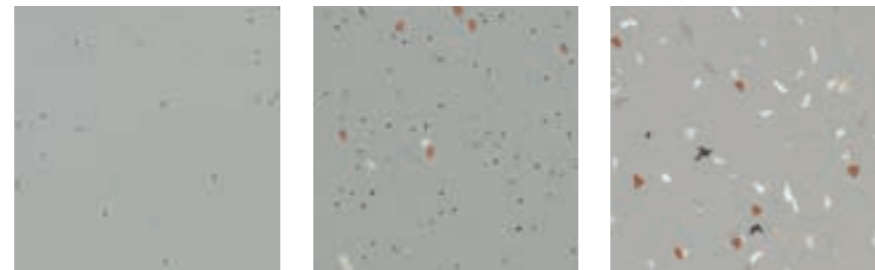
Find us on

creating better environments

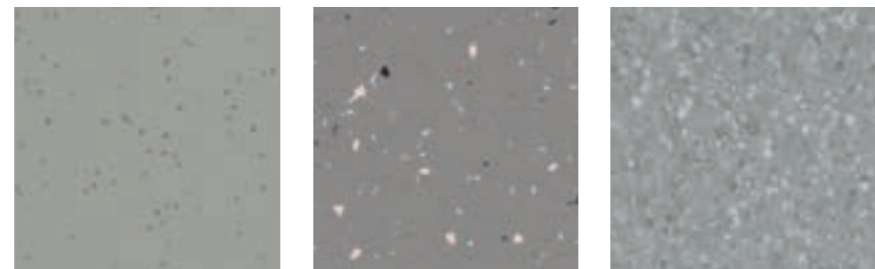
03002239751 Australia



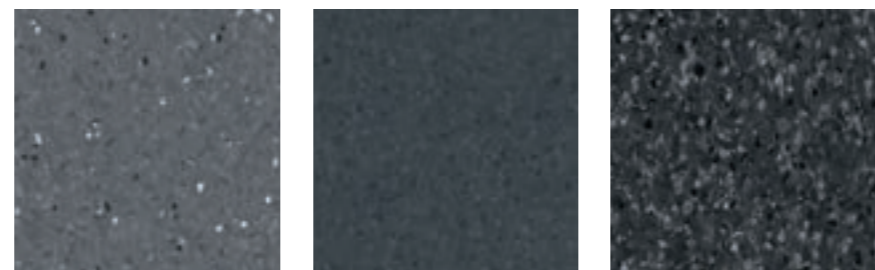
51243 | vivid snow    50000 | white    50062 | storm grey



50202 | concrete    51202 | vivid concrete    52202 | shimmer concrete



50482 | smokey quartz    50011 | steel    51001 | contrast black



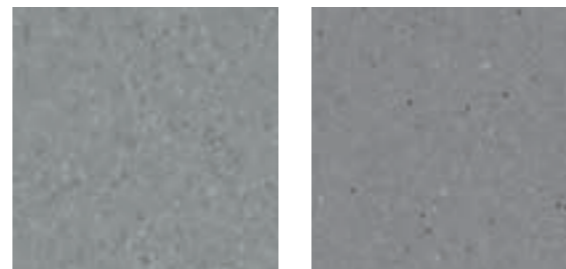
50482 | smokey quartz    50011 | steel    51001 | contrast black



50480 | selenite    50007 | grey sky



50481 | seiryu    50008 | silver grey



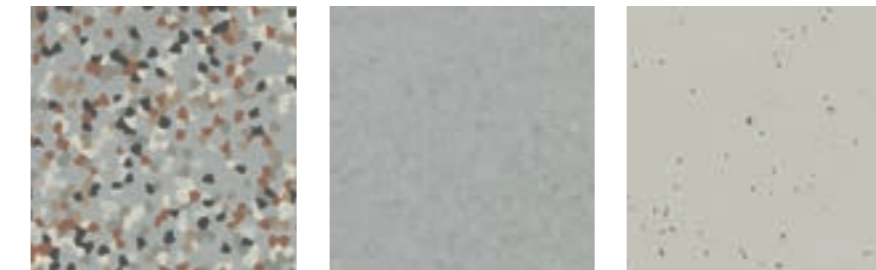
50009 | lead    50483 | hematite    50010 | iron



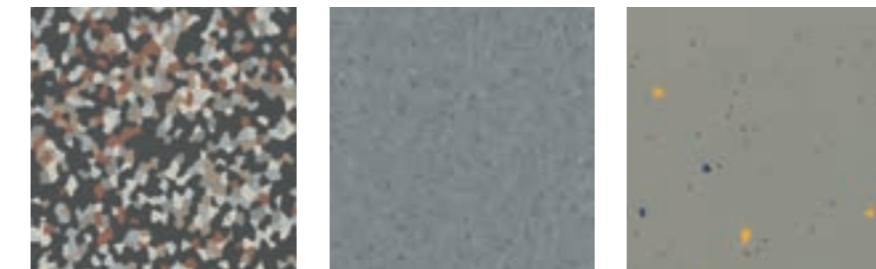
51244 | vivid ebony    52215 | shimmer ebony    50215 | ebony



50003 | light neutral grey    51004 | contrast mid grey    50484 | coquina



53202 | confetti concrete    50004 | mid neutral grey    50211 | stone



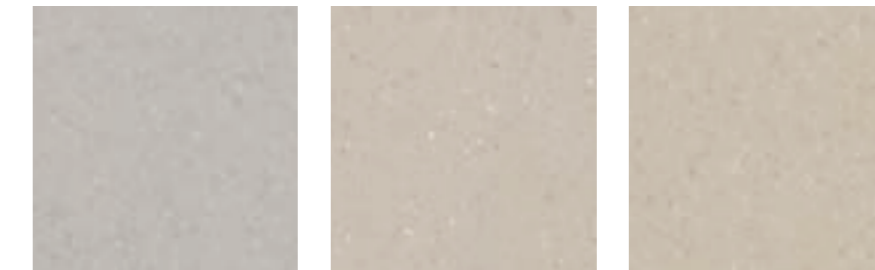
53215 | confetti ebony    50005 | dark neutral grey    51212 | vivid elephant



50489 | pyrite    50006 | anthracite    50485 | obsidian



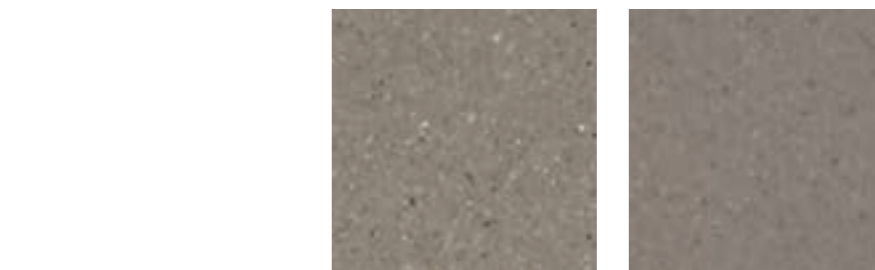
50017 | ivory



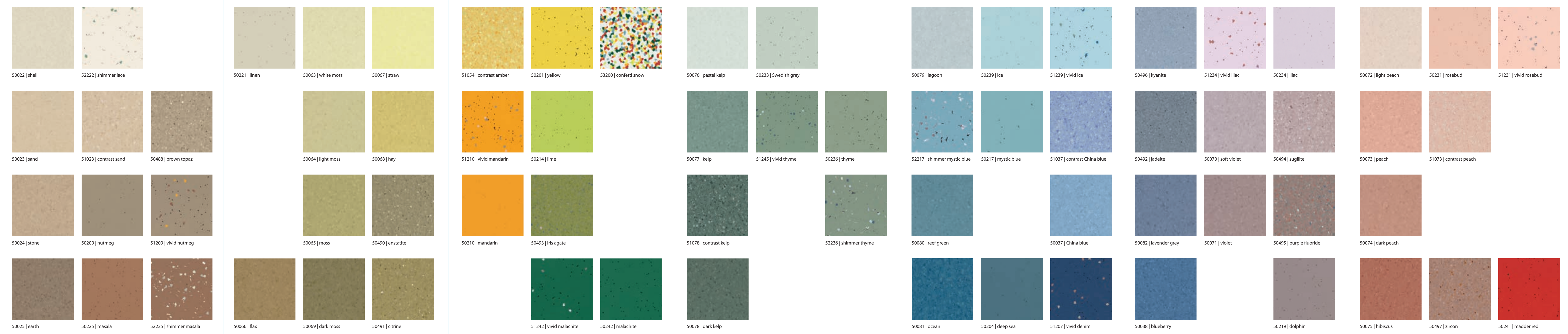
50028 | greige    50486 | sardonyx    50018 | mortar



50029 | taupe    51018 | contrast mortar    50019 | clay



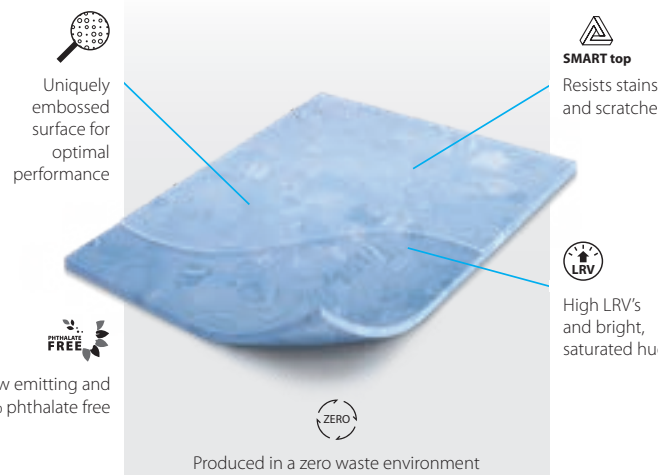
50487 | axinite    50020 | silt



sphera®  
THE MOST COMPLETE DESIGN OFFER IN PREMIUM HOMOGENEOUS VINYL



Sphera is a stylish and design inspired collection of premium homogeneous vinyl flooring.



**Innovative, design driven homogeneous vinyl**  
Sphera is Forbo's brand of premium homogeneous vinyl flooring. A diverse and fit for purpose design offer adding style and comfort to any interior. All Sphera collections are carefully developed by our in-house design team in Europe with different application areas in mind. Sphera provides healthy and hygienic solutions using the latest production technology.

**Fit for purpose**  
The three distinctive collections have their own character and profile. Sphera Element has the most complete colour proposition commercially available and the subtle design is ideal for use in areas where the floor is required to softly blend in with the environment. Sphera Energetic offers a playful combination of a coordinated colour palette and designs with different intensity and scale. The lightweight and durable Sphera Elite has an intriguing, sophisticated appearance and will transform your area into a higher level visual and appealing place.

**Creating better environments**  
From the initial concept Sphera has been developed to avoid any unnecessary waste and minimize energy and raw material use. Sphera is a premium quality homogeneous vinyl through and through. All waste is reused in other premium products from Forbo Flooring Systems. Sphera is produced with 100% green electricity with minimal impact on the environment and complies with the GBCA's requirements for Best Environmental Practice PVC.



sphera® element

Sphera Element has the most complete and widest colour offer of all homogeneous floors. With a broad range of subtle and soft neutrals along with contrasting tones, Element is ideal for use in areas where the floor is required to blend with the environment. The carefully selected outspoken pastels and bright accent colours are ideal for areas requiring zoning or to create an authentic and welcoming interior.



sphera® energetic

This exciting range brings a new dynamic to homogeneous vinyl flooring. With its vibrant visuals it answers the diverse needs in modern spaces. Sphera Energetic offers a playful combination of a co-ordinated colour palette and designs with different intensity and scale, making it fit for purpose across any function or intensity of use.



creating better environments

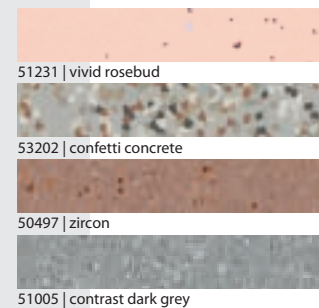
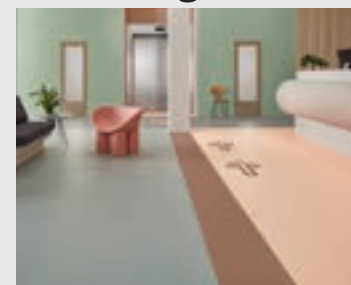
FLOORING SYSTEMS



## dynamics of a building

The dynamics of a building philosophy no longer looks at the traditional split in segments but works from a philosophy that is based on the identity a space has and what function it serves for the users. In the built environment there are many functions that need to be fulfilled and using this identity as a guiding system works on ensuring the optimal atmosphere and design in a building. Each dynamic has its genuine identity created by the contrast, intensity and positioning of the colours. It is the overall expression of the selected colours that represents the defined atmosphere, the examples shown give you some of our inspiration. With its vibrant visuals, Sphera meets the diverse needs in modern spaces and brings a new dynamic to homogeneous vinyl flooring.

### receiving *welcome, attractive, accessible, inside-outside*



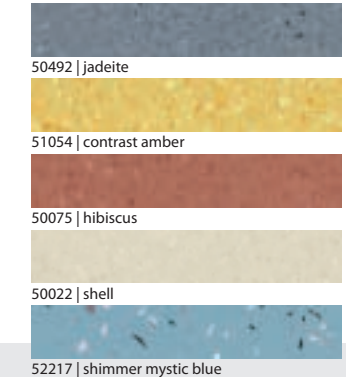
### moving *dynamic, temporary, orientation, zoning*



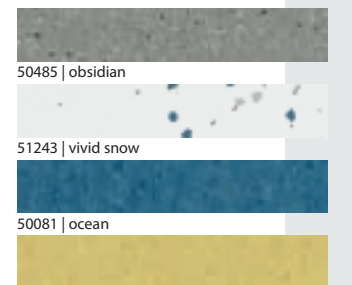
## sphera® elite

Sphera Elite has an intriguing appearance, making a subtle reference to natural materials. The organic pattern will transform your area into an appealing place and the floor will perform for many years with its forgiving visual and extremely durable construction.

## concentrating *introvert, focus, safely, acoustic*



### communication, dialogue, stimulating, curiosity **connecting**



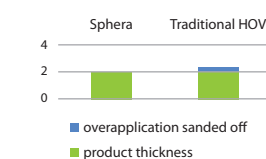
### recharging *relaxing, well-being, energizing, open*



## creating better environments

### Avoid waste, save energy

Producing Sphera at 2mm thick in one step, without back sanding, reduces waste by 10-15%. The little waste created gets safely recycled into our heterogeneous vinyl collections, through our internal recycling process on site.



### Sphera third party EPD

Forbo Flooring Systems was one of the first companies worldwide to embrace EPDs and has comprehensive coverage across our product portfolio. A specific EPD for Sphera with additional information to show the impact on human health and eco toxicity is available.



### Product stewardship

Forbo Flooring Systems offer installation waste take-back programs and work with existing industry bodies to recycle where available and the balance for logistics and sustainability makes sense. We have several programs for vinyl, including recycling of Sphera, in a growing number of countries.



### Reducing CO<sub>2</sub> emissions with Green Electricity

Sphera is produced with 100% electricity from renewable resources, significantly contributing to the reduction of CO<sub>2</sub> emissions.



## DESIGN COLOUR

- A diverse offer of colour and design to meet all requirements and dynamics of a building.
- Infinite possibilities to combine within and between the 3 collections and all coordinated with Forbo's extended functional portfolio of floor coverings.
- Contemporary globally relevant colour palette, including a large selection of colours with high LRV's and low gloss to enhance user experience.

## TECHNOLOGY SUSTAINABILITY

- The SMART-top surface finish and its consistent application ensure the highest resistance to chemicals, scratches and stains, providing superior all over protection and easy cleaning
- Sphera meets the Green Building Council of Australia's Best Environmental Practice PVC requirements.
- Sphera Element is approved for use in cleanrooms up to ISO class 4 by the Fraunhofer Institute.

## PERFORMANCE DURABILITY

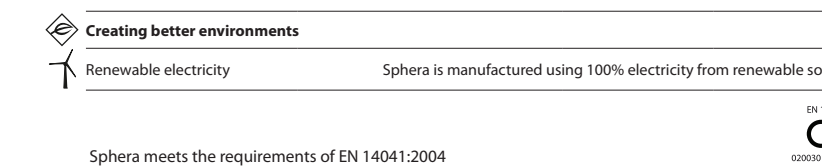
- Low emissions & phthalate free manufacturing contribute to a healthy indoor environment.
- New technology powered by green electricity, delivers consistent quality in an efficient and sustainable way with zero waste.
- Carefully selected raw materials to offer possibilities for recycling after end of life.
- Low energy and water use thanks to the efficient state-of-art production process.

## Technical specifications

Sphera meets the requirements of EN ISO 10581

		Sphera Element	Sphera Energetic	Sphera Elite
Total thickness	EN ISO 24346	2.0 mm	2.0 mm	2.0 mm
Surface finish		SMART top	SMART top	SMART top
Wear layer binder content	EN ISO 10581	Type 1	Type 1	Type 1
Collection size		52	42	18
Domestic use	EN ISO 10874	Class 23	Class 23	Class 23
Commercial use	EN ISO 10874	Class 34	Class 34	Class 34
Light industrial use	EN ISO 10874	Class 43	Class 43	Class 43
Roll width	EN ISO 24341	2.0 m	2.0 m	2.0 m
Roll length	EN ISO 24341	≤ 27 m	≤ 27 m	≤ 27 m
Total weight	EN ISO 23997	2900 g/m <sup>2</sup>	2850 g/m <sup>2</sup>	2700 g/m <sup>2</sup>
Dimensional stability Typical value	EN ISO 23999	≤ 0.4% ~ 0.2%	≤ 0.4% ~ 0.2%	≤ 0.4% ~ 0.2%
Reaction to fire	AS9239-1	CRF > 9 kW/m <sup>2</sup> - smoke CRF < 750 % per min	CRF > 9 kW/m <sup>2</sup> - smoke CRF < 750 % per min	CRF > 9 kW/m <sup>2</sup> - smoke CRF < 750 % per min
Slip resistance	AS4586	P3*	P3*	P3*
Slip resistance (ramp test)	AS4586:2013	R10	R10	R10
Castor chair continuous use	ISO 4918	Pass	Pass	Pass
Residual indentation Typical value	EN ISO 24343-1	≤ 0.10 mm ~ 0.03 mm	≤ 0.10 mm ~ 0.03 mm	≤ 0.10 mm ~ 0.03 mm
Colour fastness to light	EN ISO 105 B-02 method 3	≥ 7	≥ 7	≥ 7
Indoor air emissions: TVOC after 28 days	ISO 16516	≤ 0.01 mg/m <sup>3</sup>	≤ 0.01 mg/m <sup>3</sup>	≤ 0.01 mg/m <sup>3</sup>
Resistance to chemicals	EN ISO 26987	Very good	Very good	Very good
Flexibility	EN ISO 24344	Ø 10 mm	Ø 10 mm	Ø 10 mm
Use in wet areas	EN 13553	Yes	Yes	Yes
Bacteria resistance	EN ISO 846	Does not support growth		
Cleanroom particle emission	ISO 14644-1	ISO 4	-	-
Life Cycle Assessment	LCA is the foundation for securing the lowest environmental impact			

Creating better environments	
Renewable electricity	Sphera is manufactured using 100% electricity from renewable sources
Sphera meets the requirements of EN 14041:2004	
Thermal conductivity	EN 12524 0.25 W/mK 0.25 W/mK 0.25 W/mK
Body voltage	EN 1815 ≤ 2.0 kV ≤ 2.0 kV ≤ 2.0 kV
Reaction to fire walls	AS5637.1-2015 Group 3 Group 3 Group 3



Creating better environments	
Renewable electricity	Sphera is manufactured using 100% electricity from renewable sources

sphera®  
THE MOST COMPLETE DESIGN OFFER IN PREMIUM HOMOGENEOUS VINYL



creating better environments