



The best of both worlds: energy efficient hardwood windows and doors with low maintenance exterior aluminium cladding. Made in Australia from plantation grown Victorian Ash timber and Australian glass with patented German hardware.



Range inclusions

- Internal IV 68mm Victorian Ash frame, external aluminium cladding
- Custom made to almost any size and shape
- Triple glazed with 2x 16mm argon gas filled gap
- Double glazed with 1x 22mm argon gas filled gap
- German hardware fittings
- Pronounced joints
- Timber spray painted with low VOC paints or stains
- Aluminium powder-coated in large range of colours
- Timber and cladding separated by 3mm clip system to stop condensation and subsequent rot
- Noise reduction up to 43dB
- Standard industry warranties apply and 10 years warranty on glass
- Suitable for Passive House
- U-values from a very low 1.0

Available in the range:

Windows: European style tilt & turn, fixed picture, clerestory/tilt, sliding, shapes

Doors: lift-slide sliding, giant lift-slide, stacker sliders, corner lift-slide, bi-fold, French, single hinged glass doors





Easily operated with the turn of the handle: tilt inwards at the top for child proof ventilation; turn and fully open for easy cleaning. Energy efficient and draft proof, with high sound protection, and secure locking.



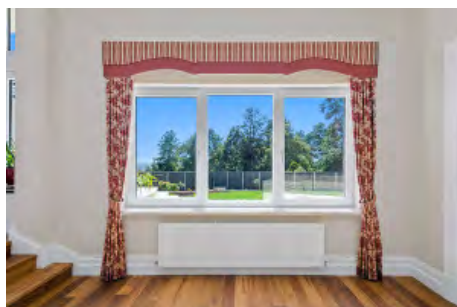
Specifications

- Internal IV 68mm Victorian Ash frame, low VOC spray-painted or stained in the colour of your choice
- External aluminium cladding powder-coated in wide range of colours
- Timber and cladding separated by 3mm clip system to stop condensation and subsequent rot
- Triple glazed 2x up to 16mm or double glazed 1x up to 22mm argon filled gap
- Choice of glass combinations
- Custom made
- German tilt & turn hardware fittings
- Seals and multi-point locking
- Childproof available
- Suited for bushfire areas up to and including BAL-29, and for Passive House

Size:

- Minimum 600mm height x 420mm width
- Width up to 1400mm at min height of 1500mm, max 2100mm
- Height up to 2700mm at max width of 1000mm

WERS energy rating: from a very low 1.0





Fixed panes enable you to enjoy a clear view without obstruction, acting as a picture frame for the scenery outside of the window. Often used in combination with openable windows or doors.



Specifications

- Internal IV 68mm timber frame, low VOC spray-painted or stained in the colour of your choice
- External aluminium cladding powder-coated in a wide range of colours
- Timber and cladding separated by 3mm clip system to stop condensation and subsequent rot
- Triple glazed 2x up to 16mm or double glazed 1x up to 22mm argon filled gap
- Choice of glass combinations
- Custom made
- Suited for bushfire areas up to and including BAL-29, and for Passive House

Size:

- Width up to 4000mm
- Height up to 4000mm
- Maximum overall 11m²

WERS energy rating: from a very low 0.8





For special spaces where only a sliding window is suitable. Parallel-slide-tilt or lift-slide options are available. Highly energy efficient and draft proof with high sound protection. Custom made to size and finish.



Specifications

- Internal IV 68mm timber frame, low VOC spray-painted or stained in the colour of your choice
- External aluminium cladding powder-coated in a wide range of colours
- Timber and cladding separated by 3mm clip system to stop condensation and subsequent rot
- Triple glazed 2x up to 16mm or double glazed 1x up to 22mm argon filled gap
- Choice of glass combinations
- Custom made
- German sliding hardware (parallel-slide-tilt or lift-slide)
- Seals and multi-point locking
- Suited for bushfire areas up to and including BAL-29, and for Passive House

Size:

- Width up to 6000mm
- Height up to 2400mm

WERS energy rating: from a very low 1.0



Perfect for opening up a large space. High energy efficiency and operated with a handle on every second window. No rattling and no need for shoot bolts. Inside folding only, also with tilt function.



Specifications

- Internal IV 68mm timber frame, low VOC spray-painted or stained in the colour of your choice
- External aluminium cladding powder-coated in a wide range of colours
- Timber and cladding separated by 3mm clip system to stop condensation and subsequent rot
- Triple glazed 2x up to 16mm or double glazed 1x up to 22mm argon filled gap
- Choice of glass combinations
- Custom made, inside folding only, also available with tilt function
- German bi-fold hardware fittings
- Seals and multi-point locking
- Suited for bushfire areas up to and including BAL-29, and for Passive House

Size:

- Width up to 6000mm
- Height up to 2400mm

WERS energy rating: U-value from a very low 1.0



Tilting inwards at the top for ventilation, windows can be horizontal or vertical. The handle controls the mechanics and multi-point locking within the frame. Can be automated for hard to reach areas.



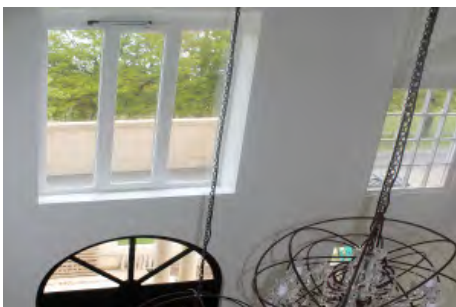
Specifications

- Internal IV 68mm timber frame, low VOC spray-painted or stained in the colour of your choice
- External aluminium cladding powder-coated in a wide range of colours
- Timber and cladding separated by 3mm clip system to stop condensation and subsequent rot
- Triple glazed 2x up to 16mm or double glazed 1x up to 22mm argon filled gap
- Choice of glass combinations
- Custom made
- German tilt hardware, multi-point locking
- Seals to eliminate drafts
- Can be automated with concealed chain drive
- Suited for bushfire areas up to and including BAL-29, and for Passive House

Size:

- Maximum width 3000mm at maximum height of 700mm
- Height up to 2700mm at maximum width of 1500mm
- Height minimum 450mm

WERS energy rating: from a very low 1.0





Custom made to size and shape to suit any building. Angled, round, oval or curved, these windows can be made in a fixed pane or can be openable, and are highly energy efficient.



Specifications

- Internal IV 68mm timber frame, low VOC spray-painted or stained in the colour of your choice
- External aluminium cladding powder-coated in a wide range of colours
- Timber and cladding separated by 3mm clip system to stop condensation and subsequent rot
- Triple glazed 2x up to 16mm or double glazed 1x up to 22mm argon filled gap
- Choice of glass combinations
- Custom made
- German tilt and turn fittings, multi-point locking
- Seals to eliminate drafts
- Childproof available
- Also fixed shapes/picture windows available
- Suited for bushfire areas up to and including BAL-29, and for Passive House

Size:

- Minimum 600mm height x 600mm width
- Width up to 1400mm at min height of 1500mm, max 2100mm
- Height up to 2700mm at max width of 1000mm
- Angled shapes only, for rounded shapes please see **Architectural Timber Windows - Shaped**

WERS energy rating: from a very low 1.0





Technologically advanced sliding doors offer the highest energy efficiency and no drafts through multi-layer seals and engineered lift-slide action. Available in many configurations.



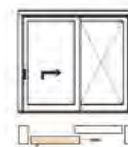
Specifications

- IV 68mm timber frame, low VOC spray-painted or stained in the colour of your choice
- External aluminium cladding powder-coated in a wide range of colours
- Timber and cladding separated by 3mm clip system to stop condensation and subsequent rot
- Triple glazed 2x up to 16mm or double glazed 1x up to 22mm argon filled gap
- Choice of glass combinations
- Custom made
- German lift and slide hardware, multi-point locking
- Seals to eliminate drafts, night vent
- Available also as giant sliders or corner sliders
- Suited for bushfire areas up to and including BAL-29, and for Passive House

Size:

- Weight up to 400kg per slider
- Slider width up to 2.4m at a maximum of 6m² per leaf
- Height up to 2.7m at a maximum of 6m² per leaf
- Overall width by request

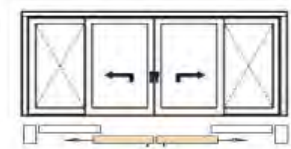
WERS energy rating: from a very low 1.0
Ultimate strength N5/C3



Scheme A



Scheme G



Scheme C



Rebated frames, seals, multi-point locking and double or triple glazing ensure the highest energy efficiency with no rattling. Operated with a handle on every second door, there is no need for shoot bolts.



Specifications

- IV 68mm timber frame, double glazed with 1x 14-20mm argon filled gap
- External aluminium cladding powder-coated in a wide range of colours
- Timber and cladding separated by 3mm clip system to stop condensation and subsequent rot
- Triple glazed 2x up to 16mm or double glazed 1x up to 22mm argon filled gap
- Choice of glass combinations
- Custom made, inside opening only, tilt option depending on configuration
- German hardware, multi-point locking
- Seals to eliminate drafts
- High energy efficiency and sound protection
- Suited for bushfire areas up to and including BAL-29, and for Passive House

Size:

- Width up to 10m (depending on height) or
- Height up to 2.8m (depending on width)

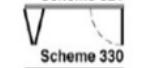
WERS energy rating: U-value from a very low 1.1



Scheme 431



Scheme 321



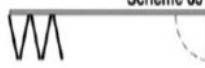
Scheme 330



Scheme 633



Scheme 651



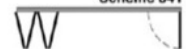
Scheme 663



Scheme 670



Scheme 541



Scheme 550



Scheme 532



Scheme 761



Scheme 770



Scheme 743



Enabling easy access to verandahs and outdoor spaces, French doors are custom made with high energy efficiency, high noise protection and no drafts, due to rebated frames, seals and multi-point locking.



Specifications

- Internal IV 68mm timber frame, low VOC spray-painted or stained in the colour of your choice
- External aluminium cladding powder-coated in a wide range of colours
- Timber and cladding separated by 3mm clip system to stop condensation and subsequent rot
- Triple glazed 2x up to 16mm or double glazed 1x up to 22mm argon filled gap
- Choice of glass combinations
- Custom made
- German hardware, multi-point locking
- Manual or automatic operation available
- Seals to eliminate drafts
- High energy efficiency and sound protection
- Suited for bushfire areas up to and including BAL-29, and for Passive House

Size:

- Width up to 2400mm
- Height up to 3000mm

WERS energy rating: U-value from a very low 1.0





High security is ensured with multi-point locking, and 3-D-adjustable hinges and seals work together to ensure a draft-free fit. Barrier-free threshold available.



Specifications

- Internal IV 68mm timber frame, low VOC spray-painted or stained in the colour of your choice
- External aluminium cladding powder-coated in a wide range of colours
- Timber and cladding separated by 3mm clip system to stop condensation and subsequent rot
- Triple glazed 2x up to 16mm or double glazed 1x up to 22mm argon filled gap
- Choice of glass combinations
- Custom made
- German hardware, multi-point locking
- Manual or automatic operation available
- Seals to eliminate drafts
- High energy efficiency and sound protection
- Suited for bushfire areas up to and including BAL-29, and Passive House

Size:

- Width up to 1400mm
- Height up to 3000mm

WERS energy rating: U-value from a very low 1.0

